

2019 CATALOGO

AFTER MARKET REPLACEMENT PARTS



MSI EQUIPMENT

UNDER-CAR EQUIPMENT REPLACEMENT PARTS



MSI EQUIPMENT






HISTORIA

MSI Equipment nace en el 2006 con el objetivo principal de llevar a Talleres y Agencias de Servicio, productos y servicios de excelente calidad, así mismo, establecer contacto de manera directa y personalizada sobre sus necesidades, con el fin de ofrecer un excelente servicio al cliente final o a su misma Empresa.

Actualmente MSI Equipment ofrece una amplia variedad en servicios y refacciones ammc coats elegidos por su gran calidad y confianza.



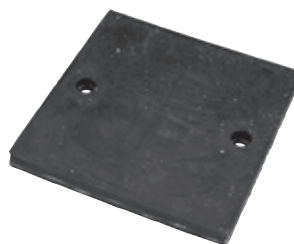
TABLA DE CONTENIDO

<p>AUTO LIFT</p>		<p>4-5</p>
<p>WHEEL BALANCING</p>		<p>6-11</p>
<p>BRAKE LATHES</p>		<p>12-47</p>
<p>TIRE CHANGERS</p>		<p>48-61</p>
<p>WHEEL ALIGNMENT</p>		<p>62-65</p>

AUTO LIFT



**RUBBER ARM PAD
FOR CHALLENGER**
(PACK OF 4)
OEM REF: A11052,A1104
#6502-4



**RUBBER ARM PAD
FOR CHALLENGER**
(PACK OF 4)
OEM REF.: A11052X, A1104X
#6503-4

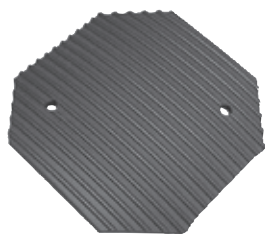


**RUBBER ARM PAD
FOR CHALLENGER**
(PACK OF 4)
OEM REF.: B2208
(FABRIC VERSION
ALSO AVAILABLE)
#6504-4

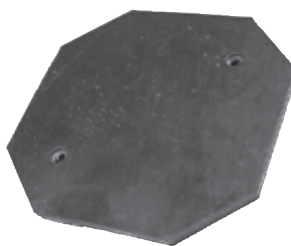


**RUBBER ARM PAD
FOR QUALITY**
(PACK OF 4)
OEM REF.:26K25030
#6505-4





RUBBER ARM PAD FOR FORWARD
 (PACK OF 4)
 OEM REF.: 994105, 991234, 991222
#6506-4



RUBBER ARM PAD FOR FORWARD
 (PACK OF 4)
 OEM REF.; 994105X, 991234XC, 991222X
#6507-4



RUBBER ARM PAD FOR FORCE
 (PACK OF 4)
 OEM REF.: 90292, 90292-4
#6508-4



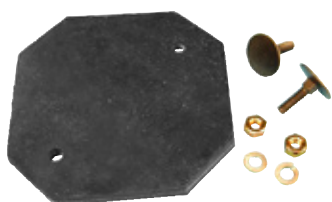
RUBBER ARM PAD FOR GLOBE/FORD SMITH
 (PACK OF 4)
 OEM REF.: 10.157
#6509-4



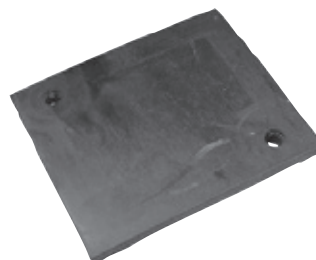
RUBBER ARM PAD FOR ROTARY
 (PACK OF 4)
 OEM REF.: FJ6155-7
#6510-4



RUBBER ARM PAD FOR ROTARY
 (PACK OF 4)
 OEM REF.: FJ6213
#6511-4



RUBBER ARM PAD FOR WESTERN
 (PACK OF 4)
 OEM REF.: S-2001
#6512-4



RUBBER ARM PAD FOR WESTERN
 (PACK OF 4)
 OEM REF.: S-2002
#6513-4



RUBBER ARM PAD FOR WHEELTRONIC
 (PACK OF 4)
 OEM REF.: 6-2050
#6514-4



BALANCING



BALANCER CONE SET

RANGE: 5.03" TO 6.88" AND 7" OFFSET SPACER

Bore Size	28mm	36mm	38mm	40mm
Kit #	2057-28	2057-36	2057-38	2057-40
Range	Individual Part Number			
5.03"-6.88" CONE	2059-28	2059-36	2059-38	2059-40
7" BACKING PLATE	2058-28	2058-36	2058-38	2058-40



WHEEL BALANCER 3 CONE SYSTEM SET

RANGE 1.175" - 3.63"

Bore Size	28mm	36mm	38mm	40mm
Kit #	2409-28	2409-36	2409-38	2409-40
Range	Individual Part Number			
1.175"-2.75" CONE	2410	8476-36	8476-38	8476-40
2.44"-3.06" CONE	2411	8253-36	8253-38	8253-40
2.95"-3.63" CONE	2412	8252-36	8252-38	8252-40
SPRING	8820	8825	8825	8825



WHEEL BALANCER 4 CONES SYSTEM SET

RANGE: 1.169" - 5.25"

Bore Size	28mm	36mm	38mm	40mm
Kit #	2415-28	2415-36	2415-38	2415-40
Range	Individual Part Number			
1.175"-2.75" CONE	2410	8476-36	8476-38	8476-40
2.44"-3.06" CONE	2411	8253-36	8253-38	8253-40
2.95"-3.63" CONE	2412	8252-36	8252-38	8252-40
3.375"-5.25" CONE	2095-28	2095-36	2095-38	2095-40
SPRING	8820	8825	8825	8825



BALANCER CONE SET

RANGE: 1.169" - 3.28"

Bore Size	28mm	40mm
Kit #	9240-28	9240-40
Range	Individual Part Number	
1.69"-2.23" CONE	9251-28	9251-40
2.15"-2.58" CONE	9252-28	9252-40
2.50"-2.94" CONE	9253-28	9253-40
2.85"-3.28" CONE	9254-28	9254-40
SPRING	8820	8825



LOW PROFILE TAPER BALANCER

RANGE 1.69" - 5.18" (SET OF 7 PCS.)

Bore Size	28mm	36mm	40mm
Kit #	9250-28	9250-36	9250-40
Range	Individual Part Number		
1.69"-2.23" CONE	9251-28	9251-36	9251-40
2.15"-2.58" CONE	9252-28	9252-36	9252-40
2.50"-2.94" CONE	9253-28	9253-36	9253-40
2.85"-3.28" CONE	9254-28	9254-36	9254-40
3.20"-3.63" CONE	9255-28	9255-36	9255-40
3.45"-4.36" CONE	9256-28	9256-36	9256-40
4.24"-5.18" CONE	9257-28	9257-36	9257-40



CONVERSION WHEEL BALANCER SHAFT

CONVERTS 28 MM TO 40 MM (COMPLETE KIT)

#13080

Kit Includes:

- **#13082:** Conversion Wheel Balancer Shaft Converts 28MM to 40 mm (Only Shaft, Coupler)
- **#812103:** 40 MM Hub Nut for Balancer Shaft with 8 MM Thread Pitch
- **#10058:** 40 MM Pressure Cup
- **#8476-40:** Balancer Cone 40 MM Bore - Range 1.175" - 2.58"
- **#8253-40:** Balancer Cone 40 MM Bore - Range 2.44" - 3.06"
- **#8252-40:** Balancer Cone 40 MM Bore - Range 2.95" - 3.63"
- **#2095-40:** Balancer cone 40 MM Bore - Range: of 3.375"-5.25"
- **#8825:** Cone Spring 36 or 38 or 40MM





BALANCER CONE SET

RANGE: 5.875" TO 7.31" WITH 7" OFFSET SPACER

Bore Size	28mm	40mm
Kit #	2061-28	2061-40
Range	Individual Part Number	
5.875" - 7.31" CONE	2060-28	2060-40
7" BACKING PLATE	2058-28	2058-40



BALANCER CONE

RANGE: 3.375"-5.88"

Bore Size	28mm	36mm	38mm	40mm
		Individual Part Number		
	29069-28	29069-36	29069-38	29069-40



BACKING PLATE

10" DIAMETER OFFSET SPACER

Bore Size	28mm	40mm
	Individual Part Number	
	83191-28	83191-40





BALANCER CONE
28 MM BORE
RANGE: 1.175"- 2.25"
#2069



BALANCER CONE
28 MM BORE
RANGE: 2.25"- 2.62"
#2096



BALANCER CONE
28 MM BORE
RANGE: 2.62"- 3.00"
#2097



BALANCER CONE
28 MM BORE
RANGE: 3.00"- 3.25"
#2098



**SPECIAL WHEEL
BALANCER CONE**
40 MM BORE
RANGE: 2.375" - 3.125"
#794-40



BALANCER ADAPTER FORD F450/F550
RANGE: 6.00"-7.00"

Bore Size	28mm	36mm	38mm	40mm
	Individual Part Number			
	JF4/550-28	JF4/550-36	JF4/550-38	JF4/550-40





40 MM HUB NUT FOR BALANCER SHAFT WITH 8 MM THREAD PITCH
#812103



SPECIAL 38 MM HUB NUT
#2375S



28 MM HUB NUT FOR BALANCER SHAFT WITH 8 MM THREAD PITCH
#7543



40 MM HUB NUT FOR BALANCER SHAFT WITH 4 MM THREAD PITCH
#2374



QUICK NUT SET FOR 28 MM BALANCER SHAFT WITH 8 MM THREAD PITCH
#2327



QUICK NUT SET FOR 36 MM BALANCER SHAFT WITH 3 MM THREAD PITCH (KIT)
#2363



QUICK NUT SET FOR 40 MM BALANCER SHAFT WITH 4 MM THREAD PITCH
#2404



40MM FAST RELEASE HUB NUT WITH 8MM THREAD PITCH INCLUDES PRESSURE CUP AND WHEEL PROTECTOR
#2383



QUICK NUT ONLY FOR 40 MM BALANCER SHAFT WITH 8 MM THREAD PITCH
#2383N



QUICK NUT ONLY FOR 40 MM BALANCER SHAFT WITH 3 MM THREAD PITCH
#2403





**SMALL PRESSURE CUP
FOR 28 MM**
#10542



40 MM PRESSURE CUP
#10058



WHEEL CALIPER
#30911



**CONVERSION WHEEL
BALANCER SHAFT**
CONVERTS 28 MM
TO 40 MM
(SHAFT ONLY)
#13082



**BALANCER SHAFT
FOR FMC**
#2373



BRAKE LATHES



22 PCS ADAPTER SET WITH 1" BORE INCLUDES ARBOR AND NUT #7347

Kit Includes:

- **#7106:** Cone 1" Bore - Range: 3.421" - 4.031"
- **#7107:** Cone 1" Bore - Range: 2.89" - 3.500"
- **#7108:** Cone 1" Bore - Range: 2.328" - 2.968"
- **#7178:** Cone 1" Bore - Range: 2.606" - 3.224"
- **#7902:** Cone 1" Bore - Range: 1.250" - 1.750"
- **#7903:** Cone 1" Bore - Range: 1.187" - 2.250"
- **#7904:** Cone 1" Bore - Range: 1.703" - 2.750"
- **#5030:** Double End Adaptors 1" Bore - Range: 1.32" - 2.89" (Set of 5)
- **#7110:** Spring for Ammco
- **#7125:** Spacer 1" Bore and ½" Length
- **#7492:** Self Aligning Spacer
- **#7193:** 5 ¾" Diameter Bell Clamp 1" Bore (2X)
- **#7489:** Small Bell Clamp 3.62" - 1" Bore
- **#7490:** Small Bell Clamp 4 ½" - 1" Bore (2X)
- **#7101:** 1" Arbor for Ammco
- **#7102:** Arbor Nut for 7101



BRONZE ADAPTER SET #10006

Kit Includes:

- **#7193:** 5 ¾" Diameter Bell Clamp 1" Bore (2X)
- **#7490:** Small Bell Clamp 4 ½" - 1" Bore (2X)
- **#5030:** Double End Adaptors 1" Bore Range 1.32" - 2.89"
- **#7903:** Cone 1" Bore - Range 1.187" - 2.250"
- **#5040:** Spacer 1" Bore X 1" Length
- **#7110:** Spring for Ammco
- **#10073:** Centering Cone Range: 2.025" x 3.99" - 1" Bore (2X)



SILVER ADAPTER SET

#10007

Kit Includes:

- **#10072:** Rotor Hub Base
- **#10073:** Centering Cone Range: 2.025" X 3.99" - 1" Bore
- **#10074:** Spacer 2" Length and 1" Bore (2X)
- **#10075:** Truck Flange Plate
- **#10079:** Centering Cone Range - 1.84" X 2.20" - 1" Bore
- **#10080:** Centering Cone Range - 2.12" X 2.48" - 1" Bore
- **#10081:** Centering Cone Range - 2.38" X 2.75" - 1" Bore
- **#10082:** Centering Cone Range 2.65" X 3.03" - 1" Bore
- **#10083:** Centering Cone Range - 2.93" X 3.30" - 1" Bore
- **#10091:** Spring Adaptek Style System
- **#9800:** Rotator Spring Silencer Assembly
- **#6041A:** Clip on Disc Silencer
- **#5030:** Double End Adaptors 1" Bore - Range: 1.32" - 2.89" (Set of 5)



GOLD ADAPTER SET

#10008

Kit Includes:

- **#10072:** Rotor Hub Base
- **#10073:** Centering Cone Range: 2.025" X 3.99" - 1" Bore
- **#10074:** Spacer 2" Length and 1" Bore (2X)
- **#10075:** Flange Plate
- **#10079:** Centering Cone Range: 1.84" X 2.20" - 1" Bore
- **#10080:** Centering Cone Range: 2.12" X 2.48" - 1" Bore
- **#10081:** Centering Cone Range: 2.38" X 2.75" - 1" Bore
- **#10082:** Centering Cone Range: 2.65" X 3.03" - 1" Bore
- **#10083:** Centering Cone Range: 2.93" X 3.30" - 1" Bore
- **#10091:** Spring Adaptek Style System
- **#9800:** Rotor Spring Silencer Assembly
- **#6041A:** Clip On Disc Silencer
- **#5030:** Double End Adaptors 1" Bore - Range: 1.32" - 2.89" (Set of 5)
- **#10078:** Light Truck Flange Plate
- **#10084:** Centering Cone Range: 3.20" X 3.58" - 1" Bore
- **#10085:** Centering Cone Range: 3.48" X 3.85" - 1" Bore



PREMIUM-CHOICE ADAPTER SET

#10009

Kit Includes:

- **#10010:** Complete Adaptor Set for Passenger Car and Light Truck (Hubless Flat Rotors) - Consists of 10011 and 10012
- **#10076:** Truck Flange Plate 10076
- **#10077:** Truck Flange Plate 10077
- **#10086:** Centering Cone Range: 3.74" X 4.14" - 1" Bore
- **#10087:** Centering Cone Range: 4.03" X 4.40" - 1" Bore
- **#10088:** Centering Cone Range: 4.30" X 4.68" - 1" Bore
- **#10089:** Centering Cone Range: 4.58" X 4.95" - 1" Bore
- **#10090:** Centering Cone Range: 4.85" X 5.32" - 1" Bore
- **#10027:** Centering Cone Range: 5.125" X 5.50"
- **#5030:** Double End Adaptors 1" Bore - Range: 1.32" - 2.89" (Set Of 5)
- **#5038:** Double ended Adapter 1" Bore - Range: 2.828" - 3.560" Truck Set ref. (Set of 2)
- **#9800:** Rotor Spring Silencer Assembly
- **#6041A:** Clip On Disc Silencer
- **#6037:** 2 3/4" Truck Drum Silencer Band Extra Long (Length 6')
- **#6030:** Natural Rubber Adjustable Ventilated Rotor Silencer Band - Fits Any Vented Rotor



COMPLETE ADAPTOR SET FOR PASSENGER CAR AND LIGHT TRUCK

(HUBLESS FLAT ROTORS) CONSISTS OF 10011 AND 10012

#10010

Kit Includes:

- **#10074:** Spacer 2" Length and 1" Bore (2X)
- **#10091:** Spring Adaptek Style System
- **#10075:** Flange Plate
- **#10072:** Rotor Hub Base
- **#10073:** Centering Cone Range: 2.025" X 3.99" - 1" Bore
- **#10081:** Centering Cone Range: 2.38" X 2.75" - 1" Bore
- **#10083:** Centering Cone Range: 2.93" X 3.30" - 1" Bore
- **#10079:** Centering Cone Range: 1.84" X 2.20" - 1" Bore
- **#10082:** Centering Cone Range: 2.65" X 3.03" - 1" Bore
- **#10080:** Centering Cone Range: 2.12" X 2.48" - 1" Bore
- **#10078:** Light Truck Flange Plate
- **#10084:** Centering Cone Range: 3.20" X 3.58" - 1" Bore
- **#10085:** Centering Cone Range: 3.48" X 3.85" - 1" Bore

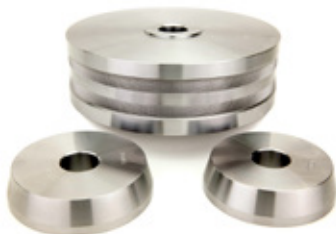


COMPLETE ADAPTOR SET FOR PASSENGER CAR (HUBLESS FLAT ROTORS)

#10011

Kit Includes:

- **#10074:** Spacer 2" Length and 1" Bore (2X)
- **#10091:** Spring Adaptek Style System
- **#10075:** Flange Plate
- **#10072:** Rotor Hub Base
- **#10073:** Centering Cone Range: 2.025" X 3.99" - 1" Bore
- **#10081:** Centering Cone Range: 2.38" X 2.75" - 1" Bore
- **#10083:** Centering Cone Range: 2.93" X 3.30" - 1" Bore
- **#10079:** Centering Cone Range: 1.84" X 2.20" - 1" Bore
- **#10082:** Centering Cone Range: 2.65" X 3.03" - 1" Bore
- **#10080:** Centering Cone Range: 2.12" X 2.48" - 1" Bore



COMPLETE ADAPTOR SET FOR LIGHT TRUCK (HUBLESS FLAT ROTORS)

#10012

Kit Includes:

- **#10078:** Light Truck Flange Plate
- **#10084:** Centering Cone Range: 3.20" X 3.58" - 1" Bore
- **#10085:** Centering Cone Range: 3.48" X 3.85" - 1" Bore



COMPLETE ADAPTOR SET FOR HEAVY TRUCK (HUBLESS FLAT ROTORS)

#10013

Kit Includes:

- **#10076:** Truck Flange Plate 10076
- **#10077:** Truck Flange Plate 10077
- **#10086:** Centering Cone Range: 3.74" X 4.14" - 1" Bore
- **#10087:** Centering Cone Range: 4.03" X 4.40" - 1" Bore
- **#10088:** Centering Cone Range: 4.30" X 4.68" - 1" Bore
- **#10090:** Centering Cone Range: 4.85" X 5.32" - 1" Bore
- **#10091:** Spring Adaptek Style System
- **#10027:** Centering Cone Range: 5.125" X 5.50"



ECONOMY MODERN ADAPTOR SYSTEM (EMAS) SET

1" BORE (12 PARTS)

#3000C

Kit Includes:

- **#3001:** 5 ¼" Adaptor Plate 1" Bore
- **#3002:** 5 ¼" Front Cup with Spring 1" Bore
- **#3003:** Cone 1" Bore - Range: 2.025" - 3.99"
- **#3004:** Cone 1" Bore - Range: 2.023" - 3.975"
- **#7492:** Self Aligning Spacer
- **#5040:** Spacer 1" Bore X 1" Length
- **#5041:** Spacer 1" Bore X 1 1/2 " Length
- **#3012:** 1" Bore Adaptor Set for EMAS. Consists of 3005 and 3006
- **#3007:** 7.55" Adaptor Plate 1" Bore
- **#5052:** Cone 1" Bore - Range: 4 ½" - 5 ½"
- **#5053:** Cone 1" Bore - Range: 3.5" - 5 ⅛ "
- **#5054:** Cone 1" Bore - Range: 5" - 6 ⅞"
- **#3009:** 4" Front Plate for EMAS Foreign Vehicles 309
- **#3014:** Cone 1" Bore - Range: 5.875" - 7.875"
- **#3015:** Backing Plate 1" Bore 8" Offset Spacer
- **#3016:** Cone 1" Bore - Range: 6.875" - 8.10"



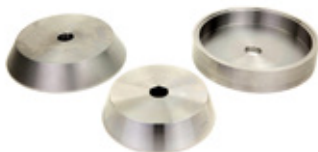
BASIC EMAS SET

1" BORE

#3000

Kit Includes:

- **#3001:** 5 ¼" Adaptor Plate 1" Bore
- **#3002:** 5 ¼" Front Cup with Spring 1" Bore
- **#7903:** Cone 1" Bore - Range: 1.187" - 2.250"
- **#3004:** Cone 1" Bore - Range: 2.023" - 3.975"
- **#7492:** Self Aligning Spacer
- **#5040:** Spacer 1" Bore X 1" Length
- **#5041:** Spacer 1: Bore X 1 ½" Length
- **#5084:** Spring for Adaptor Cup



3 PCS SET HEAVY DUTY TRUCK

RANGE: 8.062" - 9.593"

#3017

Kit Includes:

- **#3014:** Cone 1" Bore - Range: 5.875" - 7.875"
- **#3015:** Backing Plate 1" Bore 8" Offset Spacer
- **#3016:** Cone 1: Bore - Range 6.875" - 8.10"



20 PIECE ADAPTOR SET

WITH 1" BORE

#7347A

Kit Includes:

- #7106: Cone 1" Bore - Range: 3.421" - 4.031"
- #7107: Cone 1" Bore - Range: 2.89" - 3.500"
- #7108: Cone 1" Bore - Range: 2.328" - 2.986"
- #7178: Cone 1" Bore - Range: 2.606" - 3.224"
- #7902: Cone 1" Bore - Range: 1.250" - 1.750"
- #7903: Cone 1" Bore - Range: 1.187" - 2.250"
- #7904: Cone 1" Bore - Range: 1.703" - 2.750"
- #5030: Double End Adaptors 1" Bore - Range: 1.32" - 2.89"
- #7110: Spring for Ammco
- #7125: Spacer 1" Bore and ½" Length
- #7492: Self Aligning Spacer
- #7193: 5 ¾" Diameter Bell Clamp 1" Bore (2X)
- #7489: Small Bell Clamp 3.62" - 1" Bore
- #7490: Small Bell Clamp 4 1/2" - 1" Bore (2X)



DOUBLE ENDED ADAPTER

1" BORE - RANGE: 2.828" - 3.560" TRUCK SET

#5038

Kit Includes:

- #5036: Double End Adaptors 1" Bore - Range: 2.828" - 3.185"
- #5037: Double End Adaptors 1" Bore 0 Range: 3.203" - 3.560"



DOUBLE ENDED ADAPTER

1" BORE RANGE 1.32" - 2.89" (5 PCS SET)

#5030

Kit Includes:

- #5031: Double End Adaptors 1" Bore - Range: 1.332" - 1.670"
- #5032: Double End Adaptors 1" Bore - Range: 1.362" - 1.710"
- #5033: Double End Adaptors 1" Bore - Range: 1.711" - 2.073"
- #5034: Double End Adaptors 1" Bore - Range: 2.074" - 2.440"
- #5035: Double End Adaptors 1" Bore - Range: 2.441" - 2.89"



HUBLESS ADAPTOR SYSTEM

5000

Kit Includes:

- #5003: Hubless Cone for 5000
- #5004: Hubless Spacer for 5000
- #5002: Hubless Locator for 5000
- #5001: Hubless Nut for 5000
- #5005: Spanner Wrench for 5000 set



TRUCK SET

1" BORE - RANGE: 4 1/2" - 5 1/2" (4 PCS)

#5061

Kit Includes:

- **#5056-1:** 7 3/4" length Bell Clamp - 1" Bore (2X)
- **#5052:** Cone 1" Bore - Range: 4 1/2" - 5 1/2"
- **#5059:** Heavy Duty Spring



TRUCK SET

1" BORE - RANGE: 3 5/8" - 5 1/8" (4 PCS)

#5062

Kit Includes:

- **#5053:** Cone 1" Bore - Range: 3 1/2" - 5 1/8"
- **#5055:** 6 1/2" Diameter Bell Clamp - 1" Bore (2X)
- **#5059:** Heavy Duty Spring



SPECIAL TRUCK SET

1" BORE - RANGE: 4 1/2" - 5 1/5" (4 PCS)

#5063

Kit Includes:

- **#5052:** Cone 1" Bore - Range: 4 1/2" - 5 1/2"
- **#5055:** 6 1/2" Diameter Bell Clamp - 1" Bore
- **#5056-1:** 7 3/4" Length Bell Clamp - 1" Bore
- **#5059:** Heavy Duty Spring



TRUCK SET

RANGE: 3 1/2" - 5 1/2" (4 PCS)
(REPLACE A PERFORMANCE 5511 SET)

#5064

Kit Includes:

- **#5053:** Cone 1" Bore - Range: 3 1/2" - 5 1/8"
- **#5055:** 6 1/2" Diameter Bell Clamp - 1" Bore
- **#5056-1:** 7 3/4" Length Bell Clamp - 1" Bore
- **#5059:** Heavy Duty Spring





TRUCK SET

RANGE: 3 7/8" - 6 1/8" (6 PCS)

#5065

Kit Includes:

- #5054: Cone 1" Bore - Range: 5" - 8 1/8"
- #5053: Cone 1" Bore - Range: 3 1/2" - 5 1/8"
- #5055: 6 1/2" Diameter Bell Clamp - 1" Bore (2X)
- #5056-1: 7 3/4" Length Bell Clamp - 1" Bore
- #5059: Heavy Duty Spring



TRUCK SET

RANGE: 3 1/2" - 6 1/2" (6 PCS)

#5066

Kit Includes:

- #5053: Cone 1" Bore - Range: 3.5" - 5 1/8"
- #5052: Cone 1" Bore - Range: 4 1/2" - 5 1/2"
- #5055: 6 1/2" Diameter Bell Clamp - 1" Bore
- #5059: Heavy Duty Spring



TRUCK SET

1 7/8" BORE - RANGE: 3 1/2" - 6 1/2" (6 PCS)

#5068

Kit Includes:

- #5059: Heavy Duty Spring
- #5053-1 7/8: Cone 1 7/8" Bore - Range: 3 1/2" - 5 1/2"
- #5054-1 7/8: Cone 1 7/8" Bore - Range: 5" X 6 1/8"
- #5055-1 7/8: 6 1/2" Length Bell Clamp - 1 7/8" Bore
- #5056-1 7/8: 7 3/4" Length Bell Clamp - 1 7/8" Bore



BORE TRUCK SET FOR F250/750

INCLUDES (2) 7 3/4" BELL CLAMPS AND 2 CONES

RANGE: 4 1/2" TO 6 1/2"

Bore Size	1"	1 7/8"	2"
Kit #	3025-1	3025-1 7/8	3025-2
Range	Individual Part Number		
7 3/4" BELL CLAMP	5056-1	5056-1 7/8	5056-2
4.50"-5.50" CONE	5052	5052-1 7/8	5052-2
5.60"-4.50" CONE	30105	30105-1 7/8	30105-2
SPRING	5059	5059	5059



LARGE TRUCK SET

INCLUDES 9.25" DIAMETER BELL CLAMP CONE RANGE: 5.50" - 6.50" AND HEAVY DUTY SPRING

Bore Size	1"	1 7/8"	2"
Kit #	3026-1	3026-1 7/8	3026-2
Range	Individual Part Number		
9.25" BELL CLAMP	30084	30084-1 7/8	30084-2
5.60"-4.50" CONE (2X)	30105	30105-1 7/8	30105-2
SPRING	5059	5059	5059



BORE EXTRA LARGE TRUCK SET

RANGE: 8.062" - 9.593" AND INCLUDES 2 12" DIAMETER BELL CLAMPS

Bore Size	1"	1 7/8"	2"
Kit #	3027-1	3027-1 7/8	3027-2
Range	Individual Part Number		
12" BELL CLAMP (2X)	30099	30099-1 7/8	30099-2
8.062" -9.593" CONE	30100	30100-1 7/8	30099-2
SPRING	5059	5059	5059



TRUCK SET

1" BORE - RANGE: 3 5/8" - 6 1/8" (5 PCS)
#5060

Kit Includes:

- **#5055:** 6 1/2" Diameter Bell Clamp - 1" Bore
- **#5056-1:** 7 3/4" length Bell Clamp - 1" Bore
- **#5053:** Cone 1" Bore - Range: 3.5" - 5 1/8"
- **#5054:** Cone 1" Bore - Range: 5" - 8 1/8"
- **#5059:** Heavy Duty Spring



TRUCK SET 1 7/8" BORE RANGE: 3 1/2" - 5 1/8"
(3 PCES) (REPLACE 5511)

#5064-1 7/8

Kit Includes:

- **#5053-1 7/8:** Cone 1 7/8" Bore - Range: 3.05"-5.125"
- **#5055-1 7/8:** 6 1/2" Length Bell Clamp - 1 7/8" Bore
- **#5056 -1 7/8:** 7 3/4" Diameter Bell Clamp - 1 7/8" Bore
- **#5059:** Heavy Duty Spring



VISITA: MSIEQUIPMENT.COM.MX
MAIL: ventas@msiequipment.com.mx



STEP ADAPTER
 TAKES 1 7/8" BORE DOWN TO 1" BORE
#7790

Kit Includes:

- **#7791:** Step Adaptor Takes 1 7/8" Bore down to 1" Bore (3X)



ADAPTER SYSTEM FOR LARGE CENTER BORE
#5088

Kit Includes:

- **#5088M:** Large Adapter Cup
- **#5084:** Spring for Adapter Cup



2 SIDED PLATE WORKS WITH 5000 SET FOR TAURUS, SABLE AND GM
#556



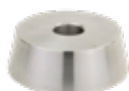
BACKING PLATE 1" BORE 10" DIAMETER OFFSET SPACER
#83191-1



SPRING
#5058



TRUCK ROTOR ADAPTOR 3/4 TO 1 TON
#8495



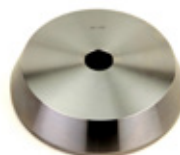
CONE 1" BORE RANGE: 4.359" X 4.568"
#7779



CONE 1" BORE RANGE: 3.828" X 4.421"
#7778



CONE 1" BORE RANGE" 2.968"-2.328"
#9722



CONE 1" BORE RANGE: 7.578" - 8.125"
#30103





7.55" ADAPTOR PLATE
1.875" BORE
#3007-1.875



CONE 1 7/8" BORE
RANGE: 2.23" TO 3.975"
#3004-1 7/8



BACKING PLATE AND FRONT MOUNTING PLATE SYSTEM FOR GM 1500 HUBLESS TRUCKS

Bore Size	1.875"	1"
Individual Part Number	#5014-1.875	#5014



BACKING PLATE FOR 5000 SET FOR TRUCKS

Bore Size	1.875"	2"
Individual Part Number	5015-1.875	5015-2



HUBLESS 4 PCS FOR 5000

#5016

Kit Includes:

- #5010: Single Sided Plate for Taurus/Sable
- #5011: Single Sided Plate for GM
- #5009: Backing Plate for 5007, 5008, 50089
- #5000: Bearing Protector for Ammco



HUBLESS 6 PCS FOR 5000

#5017

Kit Includes:

- #5000: Bearing Protector for Ammco
- #5009: Backing Plate for 5007, 5008, 50089
- #5007: 2-Sided Plate Works with 5000 Set for Jeep
- #5008: 2-Sided Plate Works with 5000 Set for Taurus, Sable and GM
- #5015: Backing Plate for 5000 Set for Trucks (Ammco and Accu-Turn Locator)
- #5014: Backing Plate and Front Mounting Plate System for GM 1500 Hubless Trucks





HUBLESS 8 PCS FOR 5000 #5018

Kit Includes:

- **#5000:** Bearing Protector for Ammco
- **#5009:** Backing Plate for 5007, 5008, 50089
- **#5010:** Single Sided Plate for Taurus/Sable
- **#5011:** Single Sided Plate for GM
- **#5012:** Single Sided Plate for Jeep
- **#5013:** Single Sided Plate for Eagle
- **#5015:** Backing Plate for 5000 Set for Trucks (Ammco and Accu-Turn Locator)
- **#5014:** Backing Plate and Front Mounting Plate System for GM 1500 Hubless Trucks



QUICK CHUCK
BACKING PLATE
#882



QUICK CHUCK LARGE
BACKING PLATE
#887



1 7/8" BORE
TRUCK CONE
#1040



4" BACKING PLATE
FOR EMAS FOREIGN
VEHICLES
#3019



2 SIDED PLATE WORKS WITH 5000 SET FOR JEEP
#5007



2 SIDED PLATE WORKS WITH 5000 SET FOR TAURUS, SABLE AND GM
#5008



SINGLE SIDED PLATE FOR TAURUS/SABLE
#5010



SINGLE SIDED PLATE FOR GM
#5011



SINGLE SIDED PLATE FOR JEEP
#5012



SINGLE SIDED PLATE FOR EAGLE
#5013



DOUBLE SIDED MOUNTING PLATE FOR GM
#5020



ARBOR NUT ASSEMBLY FOR FMC
#9547





SPECIAL SAAB CONE
#5023



SPECIAL PORSCHE CONE
#5024



**1 7/8" BORE
ADAPTER CUP**
#5081



**F150 ROTOR ADAPTER
1" BORE (3 PCES)**
#5532



**2" BORE CONE FOR
ADAPTOR CUP**
#5082



NUT FOR 5237
#5238



**STUB ARBOR
FOR PERFORMANCE
BRAKE LATHE**
#5237



STUB ARBOR SET
#5239



**1" ARBOR
FOR HOFFMANN
AND RJ WEST**
#5389



**SPECIAL ARBOR
FOR TRUCK**
#5400



**11/16" ARBOR ONLY
FOR ALL TOOL**
#5544



**11/16 ARBOR SET
FOR PERFORMANCE
OR ALL TOOL**
#5831



**1" ARBOR
FOR AMMCO**
#7101



**1" ARBOR
FOR FMC**
#8043



**1" ARBOR
FOR HUNTER,
PERFORMANCE
AND ALL TOOL**
#8500



**1" ARBOR
FOR ACCU-TURN**
#8701



1" ARBOR SET FOR VN
#20442



**1" EXTENDED ARBOR
SET FOR VN**
#20442 EXT



11/16" ARBOR KIT SET FOR AMMCO
(6 PCS.)
7708



Kit Includes:

- **#7122:** 11/16" Arbor for Ammco
- **#7118:** Cone 11/16" Bore - Range 0.750"-1.375"
- **#7882:** 11/16" Arbor Nut for Ammco
- **#7120:** Spacer 11/16" Bore and 0.5" length
- **#7121:** Spacer 11/16" Bore and 1" length
- **#7138:** Spherical Washer



1" EXTENDED ARBOR FOR VN
#869187



2" ARBOR FOR VN
#869186



ARBOR FOR HUNTER (SMALLER ENDS)
#97422-3



1" ARBOR FOR HUNTER
#97422



ARBOR NUT FOR VN, ACCU-TURN AND FMC
#20474



1" ARBOR NUT FOR 5389
#5390



SPACER 1" BORE X 2" LENGTH
#5042



ARBOR NUT FOR 7101
#7102





RH & LH ROUND BIT TOOL HOLDER SET
#BH69

Kit Includes:

- **#BH69R:** Right Hand Round Bit Tool Holder
- **#BH69L:** Left Hand Round Bit Tool Holder



R & L RIGHT HAND TOOL HOLDER FOR ACCU-TURN AND FMC
#9043

Kit Includes:

- **#9043L:** LH Round Tool Holder
- **#9043R:** RH Round Tool Holder



LH POSITIVE TOOL HOLDER FOR KWIKWAY
#7091



RH POSITIVE TOOL HOLDER FOR KWIKWAY
#7090



LH TOOL HOLDER FOR AMMCO
#7650



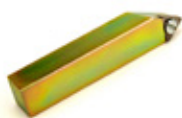
RH TOOL HOLDER FOR AMMCO
#7651



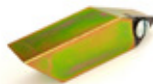
LH NEGATIVE TOOL BIT HOLDER
#7702



RH NEGATIVE TOOL BIT HOLDER
#7701



NEGATIVE DRUM TOOL HOLDER FOR AMMCO (NEGATIVE RAKE)
#7872



SHORT NEGATIVE DRUM TOOL HOLDER FOR AMMCO (NEGATIVE RAKE)
#7872S



NEGATIVE DRUM TOOL HOLDER FOR AMMCO (POSITIVE RAKE)
#7872P





**LH POSITIVE
TOOL HOLDER**
#8764L



**RH POSITIVE
TOOL HOLDER**
#8763R



**LH POSITIVE
TOOL HOLDER
(SHORT VERSION)**
#8763LS



**RH POSITIVE
TOOL HOLDER
(SHORT VERSION)**
#8763RS



**LH CURVED
TOOL HOLDER**
#90489L



**RH CURVED
TOOL HOLDER**
#90489R



**ZERO ANGLE DRUM
TOOL HOLDER FOR
ACCU-TURN AND FMC
(SHORT VERSION)**
#8286S



**ZERO ANGLE DRUM
TOOL HOLDER FOR
ACCU-TURN AND FMC**
#8286



**SHORT POSITIVE RAKE
TOOL HOLDER
(FOR DRUMS)**
#7970



**SWIRL TOOL ASSEMBLY
FOR NON-DIRECTIONAL
FINISH**
#7740



**4" PSA SANDING DISC,
GRIT 80 FOR 7740
(12 PACK)**
#7756-12



**4" PSA SANDING DISC,
GRIT 80 FOR 7740
(24 PACK)**
#7756-24



INSERT FOR AMMCO
(PACK OF 10)
#6918



POSITIVE RAKE
STANDARD BITS
FOR FMC (10/PACK)
#7487



POSITIVE RAKE BITS
KWIKWAY/ SNAP ON
(10/PACK)
#7109



POSITIVE RAKE BIT
(10/PACK)
#7681



INSERTS FOR
ACCU-TURN
(10/PACK)
#7796



0.048" RADIUS
POSITIVE RAKE BITS
(10/PACK)
#90327



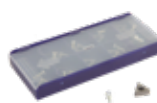
RH DRUM BITS FOR VN
(PACKS OF 10)
#24176



ROUND POSITIVE RAKE
BITS KWIKWAY/SNAP
ON AND AMMCO
(PACK OF 10)
#CB69



PRO CUT TYPE BITS
(10/PACK)
#CB50701



AMMCO INSERT THICK
(10/PACK)
#7914TH





LH DRUM BITS FOR VN
(PACKS OF 10)
#24209



HUNTER MICRO BITS
(PACK OF 10)
#2216263



BEAR TYPE BIT
(PACK OF 10)
#72283



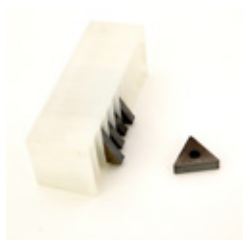
INSERTS ACCU-TURN
(10/PACK) PREMIUM
#7796P



**PRO-CUT POSITIVE
RAKE BITS FOR 50695**
(PACK OF 10)
#50742



INSERTS ACCU-TURN
(10/PACK) PREMIUM
#CB43396P



**LARGE NEGATIVE
RAKE BITS (10/PACK)**
#CBDRL90



**NEGATIVE RAKE BIT
AMMCO (10/PACK)**
#7914



INSERTS FOR VN
(10/PACK)
#7687



**TOOL BITS FOR
KWIKWAY**
(PACK OF 10)
#80310



**UNIVERSAL CLIP-ON
SILENCER WITH VELCRO
HOLD ON STRIP**
#6042



**CLIP-ON SILENCER FOR
PRO CUT LATHES**
#6045



**ROTOR SILENCER FOR
AMMCO - ASSEMBLY**
#7075



**CLIP-ON DISC
SILENCER**
#6041A



**HEAVY DUTY CLIP-ON
SILENCER FOR PRO-CUT**
#6041B



**HEAVY DUTY CLIP-ON
DISC SILENCER**
#6041HD



**ROTOR SILENCER
BAND- FITS ANY
VENTED ROTOR-
BLACK NEOPRENE**
#6030N



**NATURAL RUBBER
ADJUSTABLE
VENTILATED ROTOR
SILENCER BAND-FITS
ANY VENTED ROTOR**
#6030





1 3/4" DRUM SILENCER BAND FOR AUTOMOTIVE DRUMS (LENGTH: 5'8)
#6036



2 3/4" TRUCK DRUM SILENCER BAND EXTRA LONG (LENGTH: 6')
#6037



UNIVERSAL VENTILATED ROTOR SILENCER - NON ADJUSTABLE
#6031



LARGE VENTILATED DISC ROTOR SILENCER RANGE: 10-12" DIAMETER
#6032



LARGE NON VENTILATED SOLID ROTOR SILENCER (NATURAL) RANGE: 10-12" DIAMETER
#6034



ADJUSTABLE LATEX TUBING VENTILATED ROTOR SILENCER
#6035



SMALL BLACK SOLID ROTOR SILENCER BAND FOR USE ON THIN ROTORS 6-9" (2 PCS. PACK)
#6039



LARGE BLACK SOLID ROTOR SILENCER BAND 10-12" DIAMETER (2 PCS. PACK)
#6040



SOLID MAGNETIC ROTOR SILENCER BAND (0.25" X 4" - 6.35MM X 101.6MM)
#6038



BRAKE LATHE ROTOR FEED REPAIR KIT FMC #6001

Kit Includes:

- **#20494:** Rotor Feed Detent Spring FMC
- **#7487:** Positive Rake Standard Bits For FMC (10PK)
- **#8077:** Rotor Feed Nut for FMC
- **#8071:** Rotor Feed for FMC



REPAIR KIT FOR AMMCO #7099

Kit Includes:

- **#7085:** Spindle Boot for Ammco (2X)
- **#7682:** Brass Ring for Spindle Boot
- **#7159:** Snap Ring for Spindle Boot
- **#7435:** Wire Boot For Ammco (2X)
- **#7854:** Red 3 Arm Knob for Ammco (3X)
- **#7142EA:** 5/16" Brass Plug replacing Ammco 3142 (2X)



BRAKE LATHE REPAIR KIT #90450

Kit Includes:

- **#7836EA:** Brass Plug for Ammco
- **#7682:** Brass Ring for Spindle Boot
- **#6030:** Natural Rubber Adjustable Ventilated Rotor Silencer Band-Fits Any Vented Rotor
- **#6036:** 1 3/4" Drum Silencer Band For Automotive Drums (Length: 5'8")
- **#7914:** Negative Rake Bit (10/pack)
- **#7854:** Red 3 Arm Knob for Ammco (3X)
- **#7085:** Spindle Boot for Ammco
- **#7996:** Shear Gear for Ammco



CROSS FEED EXTENSION PLATE KIT FOR AMMCO #7936

Kit Includes:

- **#7936MC:** Plate (not sold individually)
- **#6937:** Flat Head Socket C (not sold individually)
- **#6938:** Flat Head Socket H (not sold individually)
- **#7222:** Longer Stud for 7936
- **#6940:** 5/16" Long Allen Wrench part of 7936
- **#7227:** Hold Down Nut

SHIFTER LEVER ASSEMBLY

#7742



Kit Includes:

- **#7744:** Shifter Lever Body for Ammco
- **#7742-1:** Shaft for Shifter Lever
- **#7742-2:** Knob for Shifter Lever (Not Sold Individually)
- **#7742-3:** Washer for Shifter Lever (Not Sold Individually)
- **#7742-4:** Retaining Ring for Shifter Lever 3/8 (Not Sold Individually)
- **#7742-5:** Spring for Shifter Lever (Not Sold Individually)

TRAP ASSEMBLY

#7757



Kit Includes:

- **#4774:** Gear for Trap Assembly (Not Sold Individually)
- **#7774:** Drive Rod for Ammco
- **#7775:** Gear Support for Ammco
- **#7757-1:** Socket Head Cap Screw 10-24 x 5/16 (Not Sold Individually)(2X)
- **#7757-2:** Spring Pin 1/8 x 5/8 (Not Sold Individually)
- **#7757-3:** Flat Washer 3/8 x .03/Thick (Not Sold Individually)
- **#7757-4:** Socket Head Cap Screw 10/24 x 5/8 (Not Sold Individually)
- **#7757-5:** Flat Washer 3/8 x .06 Thick (Not Sold Individually)
- **#7757-6:** Dowel Pin 3mm x 6mm (Not Sold Individually)
- **#7757-7:** Spacer 1/2 OD x 1/8 Length for 10# Screw (Not Sold Individually)(2X)
- **#47719:** Coupling Replacement (Replaces 7541)

RIGHT ANGLE DRIVE

#9815



Kit Includes:

- **#9815M:** Right Angle Drive Machine Housing (Not Sold Individually)
- **#9815-1:** Needle Roller Bearing (Not Sold Individually) (2X)
- **#9815-2:** Thrust Race 815 RT Drive (Not Sold individually)
- **#9815-3:** Retaining Ring 1/2" Shaft Side Mount (Not Sold Individually) (2X)
- **#9815-4:** 1-3/8 Hole Plug for RT Drive (Not Sold Individually)
- **#7797:** Worm Drive For Ammco
- **#7821:** Coupling Assembly for Ammco
- **#7996:** Shear Gear for Ammco
- **#7821B:** Brass Bushing
- **#9815-5:** 10-24 x 1/4" Set Screw (Not Sold Individually) (2X)

SLIDING FRICTION GEAR FOR AMMCO

#73082



Kit Includes:

- **#7348:** Belleville Washer For 7382 Bushing (Not Sold Individually) (10X)
- **#7349:** 1 3/4 Med Duty Snap Ring (Not Sold Individually)
- **#7378:** Friction Gear Replaces Ammco 903078
- **#7350:** Thrust Washer 1.75 DIA (Not Sold Individually)



ALUMINUM PULLEY SET WITH BELT
(NOW ALSO AVAILABLE IN STEEL ON REQUEST)
#7175AL

Kit Includes:

- **#21894-0008A:** PULLEY (Not Sold Individually)
- **#21894-0007A:** PULLEY (Not Sold Individually)
- **#7175AL-B:** 20" Belt for 7175AL
- **#7175SS:** Steel Pully 5/16-18 X 1/4 Set Screw (Not Sold Individually) (2X)



LARGE PULLEY AND PIN
#7784-1



SMALL DRIVE PULLEY FOR AMMCO
#7024



DIAL ASSEMBLY PART OF AMMCO TWIN CUTTER
#7901

Kit Includes:

- **#7908:** Dial Assembly Rod for Ammco
- **#7907:** Dial Micrometer for Twin Cutter 7900
- **#7906:** Plug Dial for Twin Cutter
- **#7923:** Knob Dial Rod and Screw For Ammco
- **#7929:** Spring Washer (not sold individually)



SHIFTER CLUTCH FOR AMMCO
#7058



SUPPORT ARM FOR AMMCO
#7324



SHIFT LEVER FOR AMMCO
#3042



WRENCH 3/8" FOR AMMCO
#7218





**PINION BUSHING
ASSEMBLY FOR
AMMCO 4000**
#7338



**FRICION GEAR
REPLACEMENT
AMMCO 903078**
#7378



**FRICION DISC FOR
AMMCO 903077**
#7377



**FRICION DISK GEAR
REPLACEMENT OEM
903081**
#7381



FEED GEAR FOR AMMCO
#7812



**DISK FEED SHIFTER
FOR AMMCO**
#7814



COUPLING ASSEMBLY FOR AMMCO
#7821

Kit Includes:

- **#29822-1:** Repair Part for Right Angle Gear Drive 9815 (Not Sold Individually)
- **#7821D:** Dowel Pin, 3/1 (Not Sold Individually)
- **#7821S:** External Retaining Ring 3/4 OD (Not Sold Individually)
- **#7825:** Roller Coupler part of 7821
- **#7826:** Gear Shaft F (Not Sold Individually)



SLIDE ROTOR FOR 7075
#7076



PADS FOR SILENCER 7075 (SET OF 2)
#7183



SPINDLE BOOT FOR AMMCO
#7085



CROSS FEED BOOT FOR AMMCO
#7087



FEED SCREW BOOT FOR AMMCO
#7086



RUBBER SPINDLE BOOT FOR AMMCO
#7401



BOOT FOR AMMCO
#7703



BEARING PROTECTOR FOR AMMCO
#4282



COGGED V BELT FOR AMMCO
#7161COG





V BELT FOR AMMCO
#7241



COGGED BELT FOR ACCU-TURN
#433673



POLY V-BELT
#J-240B



V BELT FOR AMMCO
#7161



SEAL FOR AMMCO
#OS3163



SEAL FOR AMMCO
#OS3164



CHIP SHIELD FOR AMMCO
#A9461



CHIP SHIELD FOR AMMCO
#7481



MOTOR MOUNT BRACKET WITH HARDWARE FOR AMMCO
#7009





**1 HP MOTOR
FOR AMMCO
#7168**



**MOTOR FOR VN
#20488**



**4 POLE SWITCH
FOR ACCU-TURN
#433693**



**TOGGLE SWITCH
FOR AMMCO
#7893**



**VARIABLE SPEED
MOTOR FOR ACCU-TURN
TRUCK LATHE
#436116**



**FEED MOTOR FOR
BRAKE LATHES
1/60 HP 6 RPM
120 VOLT, 60 HZ,
1.5 AMPS
(INCLUDES FAN)
ACCU-TURN
#433641**



**WORK LIGHT
FOR AMMCO
BRAKE LATHES
#7963**



**WORK LIGHT FOR
ACCU-TURN
#8685**



**FAN FOR 433641
#4135**



**WAY COVER FOR
ACCU-TURN
#8735**





WAY COVER WIPER FOR ACCU-TURN SET OF 3
#8736



WAY COVER SPACER FOR ACCU-TURN
#8682



TWIN CUTTER ASSEMBLY FOR AMMCO
#7950

Kit Includes:

- #7920: Screw for Twin cutter (Not Sold Individually)
- #7650: LH Tool Holder Ammco
- #7651: RH Tool Holder Ammco
- #7584: New Style Brass for Twin Cutter from Ammco (2X)
- #7854: Red 3 Arm Knob for Ammco (2X)
- #7905: Return Spring for Twin Cutter (2X)
- #7910: Spring for Twin Cutter (2X)
- #7879: Locator Screw Ammco Twin Cutter (2X)
- #7909: Screw for Twin cutter Sq head (Not Sold Individually) (2X)
- #7900: Twin cutter Body(Not Sold Individually)
- #7911: 1/4/20 Lock nut (Not Sold Individually) (2X)
- #7977: Plug (Not Sold Individually) (2X)
- #7901: Dial Assembly part of Ammco Twin Cutter (2X)



LOCATOR SCREW AMMCO TWIN CUTTER
#7879



BRASS PLUG FOR AMMCO (PACK OF 10)
#7836



5/16" BRASS PLUG REPLACEMENT AMMCO 3142 (PACK OF 10)
#7142



3/16" BRASS PLUG REPLACEMENT AMMCO 3141 (PACK OF 10)
#7141



NEW STYLE BRASS FOR TWIN CUTTER FROM AMMCO
#7584





**LEAD NUT
FOR AMMCO
(NEW LONGER
VERSION)
#7712**



**LEAD SCREW
FOR AMMCO
#7670**



**LEAD SCREW NUT
FOR AMMCO
#7868**



**DRUM FEED NUT
FOR FMC
#8845**



**DRUM FEED NUT
FOR ACCU-TURN
#8646**



**ROTOR FEED NUT
FOR ACCU-TURN
#8647**



**NEW LEAD SCREW
NUT FOR AMMCO
#78529**



**LEAD SCREW NUT
FOR AMMCO
#7868X**



**SHORT STUD
FOR AMMCO
#7031**



**LEAD SCREW
FOR AMMCO
#7211**



**LEAD SCREW
FOR AMMCO
#7318**



**SHAFT
#7337**





STUD FOR AMMCO
#7913



DRUM LEAD SCREW FOR AMMCO
#7918



DRUM LEAD SCREW FOR AMMCO (LONGER VERSION)
#7919



ROTOR FEED FOR FMC
#8071



ROTOR FEED SCREW FOR ACCU-TURN
#8156



DRUM FEED SCREW FOR ACCU-TURN
#8157



DRUM FEED SCREW FOR FMC
#8667



ADJUSTMENT SCREW FOR ACCU-TURN
#8760



HEX DRIVE ROD FOR FMC
#8670



SHIFTER SHAFT FOR AMMCO
#77748





SHAFT FOR AMMCO
#77755



WORM DRIVE FOR AMMCO
#77997



GUIDE BAR FOR EXTENDING SLIDES
#70346



LONG BORING BAR FOR AMMCO 4100
#7844



UPPER CLAMP FOR AMMCO
#2017



LOWER CLAMP FOR AMMCO
#2066



STANDARD BORING BAR FOR AMMCO
#7843



11/16" SPHERICAL WASHER SET OF 2 FOR AMMCO
#7034



MICROMETER REPAIR SCREW
#1016776



KNURLED KNOB FOR AMMCO
#7084



CROSS FEED SPRING
#7064



SPHERICAL WASHER FOR AMMCO
#7165





**INDEX PLATE FOR
AMMCO (PACK OF 10)**
#7747



**LARGE SPRING FOR
SPINDLE BOOT FOR
AMMCO**
#2045



**REAR CLAMP
FOR AMMCO**
#7592



T-BOLT FOR ACCU-TURN
#8633



**CRANK HANDLE
FOR HAND WHEEL**
#23026



**RED 3 ARM KNOB
FOR AMMCO**
#7854



RED CAP FOR AMMCO
#7974



**ALIGNMENT WASHER
SET OF 2 FOR
ACCU-TURN**
#83715



**THREADED KNOB
FOR FMC**
#66704



HEX SHAFT FOR FMC
#90083



**SMALL SPRING
FOR AMMCO**
#3595



**SEALED BEARING
DRIVE TOOL**
#5021



**HEX SHAFT ASSEMBLY
FOR FMC**
#90686



DIP STICK FOR AMMCO
#DS3148



**TORQUE WRENCH
FOR MINI SCREW**
#2216282



**WRENCH 1 1/4"
FOR AMMCO**
#7022



MICROMETER
#6201



**PASSENGER CAR
DRUM GAUGE**
#6456



TRUCK DRUM GAUGE
#6478



**5/16" LONG ALLEN
WRENCH PART OF 7936**
#6940



**DRUM AND ROTOR
MEASURING KIT**
#72010777



MICROMETER
#72234202





TWIN CHUCK KIT

For Machining Hub-less Drums and Rotors through 1 Ton Trucks.

The kit comes complete with two separate Quick Chucks one with standard jaws & standard plate and one with large jaws & large plate, Plus small plate and Toyota plate.

#8240

Key Features: No Jaws to Change and optimal for shops with 2 or more brake lathes

Kit Includes:

- **Quick Chuck Adapter** (with Standard Backing Plate and wrench)
 - Quick Chuck (3 jaw chuck, 5" diameter)
 - Standard Backing Plate (5" diameter)
 - Wrench
- **Quick Chuck Adapter (Trucks)**
 - (with Truck Jaws, Large Backing Plate and wrench)
 - Quick Chuck (3 jaw chuck, 5" diameter w/ Truck Jaws)
 - Large Backing Plate (7.25" diameter)
 - Wrench
- **Toyota Backing Plate** (6.25" diameter)
- **Small Backing Plate** (4.75" diameter)



QUICK CHUCK ADAPTER

Kit allows machining of hub-less Drums and Rotors with centering holes from 2-1/8" to 5-3/4" (Compact cars through 1-ton trucks.)

#7040

Key Features: No Jaws to Change and optimal for shops with 2 or more brake lathes

Kit Includes:

- **Quick Chuck Adapter #7040** (with Standard Backing Plate and wrench)
 - For centering holes from 2-18" to 3-3/4"
 - Quick Chuck (3 jaw chuck, 5" diameter)
 - Standard Backing Plate (5" diameter)
 - Wrench Part

ACCESSORIES:

Small Backing Plate

Toyota Backing Plate

Large Backing Plate

Large Jaw Set *



*INTER- CHANGEABLE LARGE JAW SET FOR CENTERING HOLES FROM 3-3/4" TO 5-3/4"



TIRE CHANGERS



SET OF 4 EXTENSION CLAMP JAWS

(RANGE: 18"-28") WITH 4 BUTTONS

OEM Coats #818948

Fits Tire Changer 50X-60X-70X

#18495-4B

Kit Includes:

- **#18495-4:** Extension Clamp Jaw (Range 18" - 28") Set of 4
- **#82250:** OEM Coats # 8182250 Set of 4



SET OF 4 ADJUSTABLE 2 BUTTON RIM CLAMP JAW

(RANGE: 6"-20") WITH 4 BUTTONS

OEM Coats # 81822474

Fits Tire changer # 5030-5040-5045-50X-60X-70X

#182247-4B

Kit Includes:

- **#182247-4:** Extension Clamp Jaw (Range 18" - 28") Set of 4
- **#82250:** OEM Coats # 8182250 Set of 4

SET OF 4 ADJUSTABLE 3 BUTTON RIM CLAMP JAW (RANGE: 18"-28") WITH 4 BUTTONS

OEM Coats # 8187926 & 8184126
Fits Tire changer # 50X-60X-70X
#18412-4B



Kit Includes:

- **#18412-4:** Extension Clamp Jaw (Range 18" - 28") Set of 4
- **#82250:** OEM Coats # 8182250 Set of 4

SET OF 4 ADJUSTABLE 2 BUTTON RIM CLAMP JAWS (RANGE: 13"-24") WITH 4 BUTTONS

OEM Coats #8184327
Fits Tire changer # 50X-60X-70X
#18426-4B



Kit Includes:

- **#18426-4:** Extension Clamp Jaw (Range 18" - 28") Set of 4
- **#82250:** OEM Coats # 8182250 Set of 4

SET OF 4 JAWS FOR COATS

OEM COATS # 8181677
FITS: TIRE CHANGER # 4060-5030-5050-5070 BASE LINE
BL200-BL300-BL400-BL500
(HAS GROUND EDGE)
#RC15-4



SET OF 4 JAWS FOR COATS

OEM COATS # 8181677
FITS: TIRE CHANGER # 4060-5030-5050-5070 BASE LINE
BL200-BL300-BL400-BL500
#RC1-4



SICAM JAW COVER (PACK OF 4) **#101402**



QUILTED SOCK LONG **#TC183604**



CAP FOR JAW PROTECTION (SET OF 4) **#24720**



JAW PROTECTION **#TCB304**





60" INFLATOR HOSE ASSEMBLY (OPEN COUPLING ONE SIDE, 1/8" MALE BSP ON OTHER SIDE)
REPLACES: REPLACES CORGHI # 714100 AND HOFFMANN # 2407055
#TI00012



54" INFLATOR HOSE ASSEMBLY (OPEN COUPLING ONE SIDE, BLANK ON OTHER SIDE)
#TI00013



11" INFLATOR HOSE ASSEMBLY (OPEN COUPLING ONE SIDE, BLANK ON OTHER SIDE)
#TI00014



60" INFLATOR HOSE ASSEMBLY (OPEN COUPLING ONE SIDE, 1/4" MALE NPT ON OTHER SIDE)
REPLACES: COATS # 106871
#TI00015



60" INFLATOR HOSE ASSEMBLY (OPEN COUPLING ONE SIDE, 1/8-28 MALE BSP ON OTHER SIDE)
REPLACES: HOFFMANN # 2408318
#TI00017



54" INFLATOR HOSE ASSEMBLY WITH SPRING GUARD (OPEN COUPLING ONE SIDE, 1/4" FEMALE NPT SWIVEL ON OTHER SIDE)
REPLACES: FMC / JOHN BEAN # 67715
#TI00020



60" INFLATOR HOSE ASSEMBLY (1/4" MALE NPT BOTH SIDES)
REPLACES: HUNTER # 137-86-2
#TI00025



62" INFLATOR HOSE ASSEMBLY (OPEN COUPLING ONE SIDE, BLANK ON OTHER SIDE)
#TI00026



EURO COUPLING FOR INFLATOR HOSE
#202



AIR CHUCK-OPEN END
#203



1/4" FEMALE AIR CHUCK-CLOSED END
#204





NYLON M/D HEAD KIT
 FOR ACCU-TURN, FMC AND JOHN BEAN
#140247: STANDARD BLACK
#140247P: PREMIUM YELLOW VERSION



Kit Includes:

- **#20024 or #20024P Fits:** ACCUTURN 3602, 3602HP, 4260, 4560MR, 4602, 5602, 5602HP HOFMANN 1520, 1565, 1620, 1625, 1625EM, 3300, 3300EM JOHN BEAN EHP SYSTEM IVE. IV, III, IIE RANGER R980X SNAP ON ALL MODELS
Replaces: ACCUTURN OEM# 20024335, HOFMANN OEM #24335, JOHN BEAN AND SNAP-ON OEM# 24335
- **#TC20025000: Bracket and Screw Used with M/D Head 224**



NYLON M/D HEAD
 FOR CORGHI
#25030: STANDARD BLACK
#25030P: PREMIUM YELLOW VERSION



Kit Includes:

- **#45031P or #45031 Fits:** ALL TOOL- ALL MODELS / COATS RC 1, RC 5, RC 10, RC 15, RC 20, EARLY 5060, 9010,9024E, APX90/ CORGHI- ALL RIM CLAMP MODELS
 HOFMANN- ALL MODELS EXCEPTS 1550, 1620,1625 HUNTER- TCX SERIES (RP11-5-400-100 ADAPTER REQUIRED TXC500 REQUIRES UPGRADE SHAFT AND ADAPTER KIT RP11-8-114-00091)
 SICE- M39, S40, S41, S43, S45, S408MAXI, S435, S436,S436TOP
Replaces: ALL TOOL OEM# G3008403/ COATS OEM# 83008403/ CORGHI OEM# 450310 HOFMANN OEM# 8314813/ HUNTER OEM# RP11-8314813/ SICE OEM# 8314813
- **#TC250: Mounting Bracket Used with M/D Head 45031**





NYLON M/D HEAD FOR COATS

FITS: 5030, 5040, 5050, 5060, 5065, 6050, 6060, 6065, 7050, 7055, 7060, 7065, 7655, 7660, 7665

REPLACES:

COATS OEM# 8180361
#18306 With hardware
#18307 Without hardware
#18279 Hardware only



LOW PROFILE GREY M/D HEAD FOR COATS HAS LARGER LIP AND DEEPER CHANNEL THAN 18306

FITS: 5030, 5040, 5060, 6050, 6060, 6065, 7050, 7055, 7060, 7065, 7660, 7665

REPLACES: COATS OEM# 184432
#84432



NYLON RED M/D HEAD FOR HUNTER

FITS: HUNTER -TC250 * TC300 * TC325

REPLACES: HUNTER OEM# 221-675-2
#03431R



MOUNT/DEMOUNT ADAPTER USED WITH NYLON M/D HEAD

#0342



NYLON M/D HEAD FOR HUNTER

#14120



STAINLESS STEEL M/D HEAD FOR SICAM/BOSCH/M&B

#26252



STAINLESS STEEL DUCK HEAD FOR JB/HOFMANN/ACCTURN/FMC

#26251



STAINLESS STEEL M/D HEAD WITH TAPER HOLE FOR COATS

#182788



STAINLESS STEEL M/D HEAD WITH ROUND HOLE FOR COATS

#183429



VISITA: MSIEQUIPMENT.COM.MX
MAIL: ventas@msiequipment.com.mx



PROTECTORS
(PACK OF 10)
#T111400096



COATS SS M/D HEAD
INSERT (PACK OF 12)
#T1182963



PROTECTOR FOR
HUNTER DUCK HEAD
(PACK OF 10)
#2684



M/D HEAD PLUG
FOR HUNTER
(PACK OF 10)
#2685



DUCK BILL INSERT
(PACK OF 10)
#20011064



PROTECTORS
(PACK OF 5)
#101608



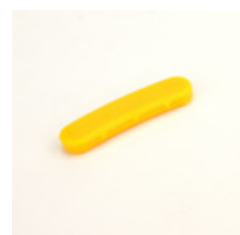
BLACK LONG
PROTECTOR FOR
M/D HEAD
(PACK OF 10)
#47G15A-10



WHEEL PROTECTOR
SEALANT BLACK
#TC106108



YELLOW NYLON INSERT
RIM PROTECTOR FOR
ACCU-TURN (PACK OF 5)
#24715



PROTECTOR
#26253



SHORT DUCK YELLOW
HEAD PROTECTOR
(10 PACK)
#TCY2064-10



COMBO TOOL FOR COATS
#0768



COMBO TOOL FOR HOFFMANN AND FMC
#66679



SPECIAL COMBO
#8560941



LONG SOCK FOR 18135
(PACK OF 10)
#TI11400098



WHITE MOUNT BOOTY
#TI00055



WHITE DEMOUNT BOOTY
#TI00030



MOTORCYCLE COMBO TOOL WHEEL PROTECTION
#7423



QUILTED SOCK SHORT
(PACK OF 10)
#TC183605





**BEAD LIFTING TOOL
(20")
#18135**



**BEAD LIFTING TOOL
(24")
#18135-24**



**TIRE SPREADER,
ADJUSTABLE FROM 0-10"
#7828**



**BASE FOR TIRE
SPREADER 7828
#7329**



**STRAIGHT TOP LUBE
BUCKET (RED)
#7259**



**ANGLED TOP LUBE
BUCKET (RED)
#7572**



**ANGLED APPLICATOR
BRUSH
#T11506**



**TIRE SWAB FOR
LUBE BUCKET
#T100050**



**4-WAY VALVE FOR
TIRE CHANGERS**
#VT41B



4-WAY AIR VALVE
#184369



**4-WAY VALVE HOUSING
FOR COATS**
#81986



**4-WAY PILOTED/SLAVE
VALVE HOUSING
FOR COATS**
#81995



**4-WAY SLAVE VALVE
HOUSING ONLY**
#181995



**TIRE CHANGER
FORWARD REVERSE
SWITCH 40AMP FOR
COATS AND CORGHI**
#21523



**TIRE CHANGER
FORWARD REVERSE
SWITCH 40 AMP FOR
CORGHI AND COATS**
#82958



**TIRE CHANGER
REVERSING ON/OFF
SINGLE PHASE SWITCH
OLD ACCUTURN AND
SOME SNAP-ON**
#86433



**SWITCH FOR COATS
5000, 6000 AND
7000 SERIES
(PREMIUM VERSION)**
#84389



SWITCH
#400682



**SWITCH FOR COATS
5000, 6000 AND
7000 SERIES
(PREMIUM VERSION)**
#184390



**ELECTRIC AIR MOTOR
FOR COATS**
#18110





TORSION SPRING FOR THE MOTOR RETURN PEDAL FOR COATS
#81707



LENS COVER WITH GASKET FOR AIR GAUGE
#107517



AIR GAUGE FOR TIRE CHANGERS (OLD STYLE COATS)
#AG107918



AIR GAUGE FOR COATS TIRE CHANGERS
#AG107985



AIR GAUGE FOR FMC TIRE CHANGERS
#AG66170



BEAD BREAKING CYLINDER SEAL KIT
#18207



MINIATURE 3 WAY CONTROL VALVE
#18231



BEAD BREAKER RUBBER PAD FOR COATS RC15 AND RC20
#81065



ONE LARGE RUBBER PAD 81851 AND TWO NYLON PADS 81855
#85185

Kit Includes:

- #81851: Large Nylon Front Pad/ Bead Loosener for Coats
- #81855: Large Center Rubber Pad



TABLE TOP CYLINDER FOR COATS TIRE CHANGERS
#81162



DROP CENTER TOOL
#81685



HEAVY DUTY DROP CENTER TOOL
#81685HD



O-RING REPAIR SET (81712 + 81713) FOR COATS TABLE TOP TIRE CHANGER
#81715





TABLE TOP CYLINDER SEAL KIT FOR COATS 5030, 5060 OR 5070
#83811



TULIP STYLE GRIPPING PADS (PK. OF 4)
#TC0066-4



ROTARY COUPLING ASSEMBLY FOR COATS
#TC182034



TIRE CHANGER O-RING REPLACEMENT KIT (PACK OF 10)
#TC9596



TABLE TOP CYLINDER REPAIR KIT FOR COATS
#TI181162



BEAD BREAKER KIT
#TI115



CAM MOUNTING BLOCK FOR COATS
#181695



CAM FOLLOWER LEVER FOR COATS
#TC181696



VALVE STEM REMOVER (PACK OF 10)
#TI47



TWO HEADED VALVE STEM REMOVER
#TI60





WHEEL WEIGHT TOOL
#T139



BOLT REMOVER
#1126



GREEN STEM FOR VALVE REPLACEMENT
#VTO3S



TORQUE WRENCH KIT
#22216282



GREY TORQUE WRENCH
#10-0308



HUB CAP HAMMER
#18141



TIRE SCRAPER
(PACK OF 6)
#M1160



RUNOUT GAUGE
#6410



REPAIR PLATE
#3056



FMC RIM CLAMP
#88794



**DRIVE GEAR
BEARING ASSEMBLY
FOR COATS 40-40**
#708260



**HOLD DOWN CONE
(FMC, HOFMANN)**
#108276



**HOLD DOWN CONE
(COATS)**
#0433



**LIFT PIN LOCK PLATE
FOR COATS**
#LP181035





WHEEL ALIGNMENT



**WHEEL CLAMP
PASSENGER STYLE**
ADJUSTABLE FROM
12" TO 19" DIAMETER
#8169



**WHEEL CLAMP
TRUCK STYLE**
ADJUSTABLE FROM
16" TO 26" DIAMETER
#8170



**STEERING WHEEL
HOLDER**
#9380



**BRAKE PEDAL
DEPRESSOR**
#9280



CAMBER GAUGE
#9480



FMC 4 LEG SET FOR CLAMPS
FOR 2 CLAMPS
#WC550-8

Available Sets:

- Set of 2 #WC550-2
- Set of 4 #WC550-4
- Set of 8 #WC550-8

Kit Includes:

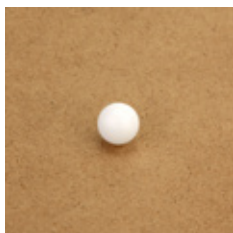
- #WC551: (not sold individually)
- #WC559: Hunter Foot Steel
- #WC552: Hunter Male Adaptor



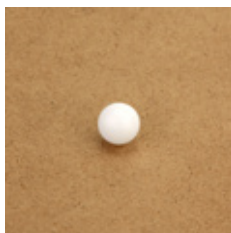
STEEL BALLS FOR TURN PLATES
1/2" DIAMETER
(PACK OF 52)
#9705ST



5/8" DIAMETER CELCON BALL FOR TURN TABLES
(PACK OF 54)
#21894



9/16" CELCON REPAIR BALL
#13065



1/2" CELCON REPAIR BALL
(PACK OF 54)
#13078



FMC CONVERSION FOOT
#WC763



FMC ALIGNMENT CLAMP
#89568



ADAPTER FOOT
#WC562



HUNTER MALE ADAPTER
#WC552



RIM GUARD SLEEVE
#WC522



EXTENDED FOOT ADAPTER
#WC562EXT



EXTENDED PLATE SET FOR FMC 4 LEGS
#WC650-4

Includes:

- #WC571: JB Third Leg (4X)
- #WC572: John Bean/FMC Extender Plate (4X)
- #WC559: Hunter Foot Steel (16X)
- #WC552: Hunter Male Adaptor (12X)
- #WC570: Replacement foot, JB Style (12X)





TRUCK & TRAILER WHEEL ALIGNMENT SYSTEM
#TLT-12

TLT-12 Heavy Truck and Trailer Consists of :

- Front Toe Laser Guns
- Rear Targeting
- King Pin Targeting
- Calibration Laser
- Calibration Bar
- Caster Camber Gauge
- Digital Level for Caster on Solid Steer Axles
- Level Compensator, used in non level surfaces
- 2 Wheel/Rim Clamps 17-25"
- Steering Wheel Holder
- Brake Pedal Depressor
- Training Video and Manual
- 2 Year Warranty

Note: Turntables are required for anything with independent suspensions. Grease Plates or some form of a slip plate is required for smooth adjustments.





PASSENGER CAR WHEEL ALIGNMENT SYSTEM

(TURNTABLES NEEDED FOR PAS. CARS)

#TL-12

TL-12 Consists of:

- Front Toe Laser Guns
- Rear Toe Combination Gauges
- Caster/Camber gauge
- Calibration Bar
- 4 Wheel clamps for rims up to 19.5"
- Steering Wheel Holder
- Brake Pedal Depressor
- Shipping Weight: 140 lbs.



MSI EQUIPMENT



VISITA: MSIEQUIPMENT.COM.MX

MAIL: ventas@msiequipment.com.mx